

# MONTHLY MEMBERSHIP PROGRESS REPORT

District 4 C1

Results as of: 5/31/2026

GMT:

LOCATION CALIFORNIA

GMT CA

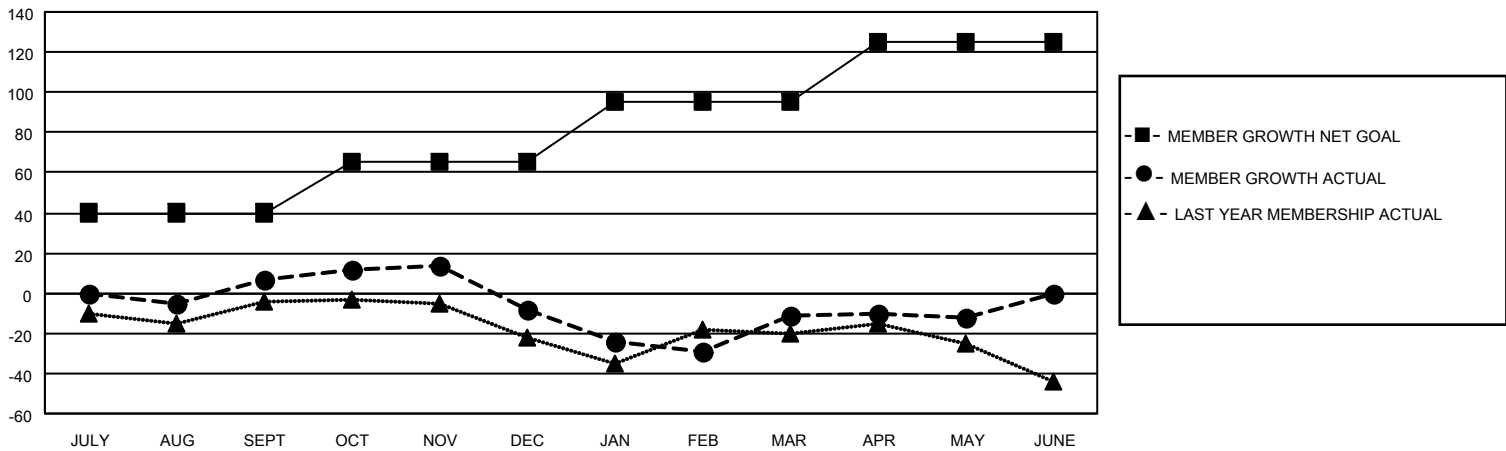
Clubs			
RESULTS FOR 2025-2026			
QUARTER	NEW CLUB GOAL	NEW CLUBS	DROPPED CLUBS
JULY/AUG/SEPT	0	0	0
OCT/NOV/DEC	0	0	1
JAN/FEB/MAR	1	0	0
APR/MAY/JUNE	0	0	0

Members			
RESULTS FOR 2025-2026			
QUARTER	MEMBER GROWTH NET GOAL	MEMBER GROWTH ACTUAL	DROPPED MEMBERS ACTUAL (including transfers)
JULY/AUG/SEPT	40	34	25
OCT/NOV/DEC	25	17	30
JAN/FEB/MAR	30	31	31
APR/MAY/JUNE	30	18	16

GOALS AND ACTUAL NEW CLUBS CUMULATIVE



GOALS AND ACTUAL MEMBERS CUMULATIVE



DROPPED CLUBS: 1	20 CLUBS OF 35 ADDED 1 OR MORE NEW MEMBERS	<b>GENDER DISTRIBUTION</b> MALE 475 (61.37%) FEMALE 299 (38.63%)
<b>DROPPED MEMBERS</b> DECEASED 15 CLUB CANCELLED 16 OTHER 70 TOTAL 101	<a href="#">CLICK HERE FOR CUMULATIVE MEMBERSHIP DATA</a>	TOTAL FAMILY UNIT MEMBERS 141 FAMILY MEMBERS PAYING HALF DUES 73